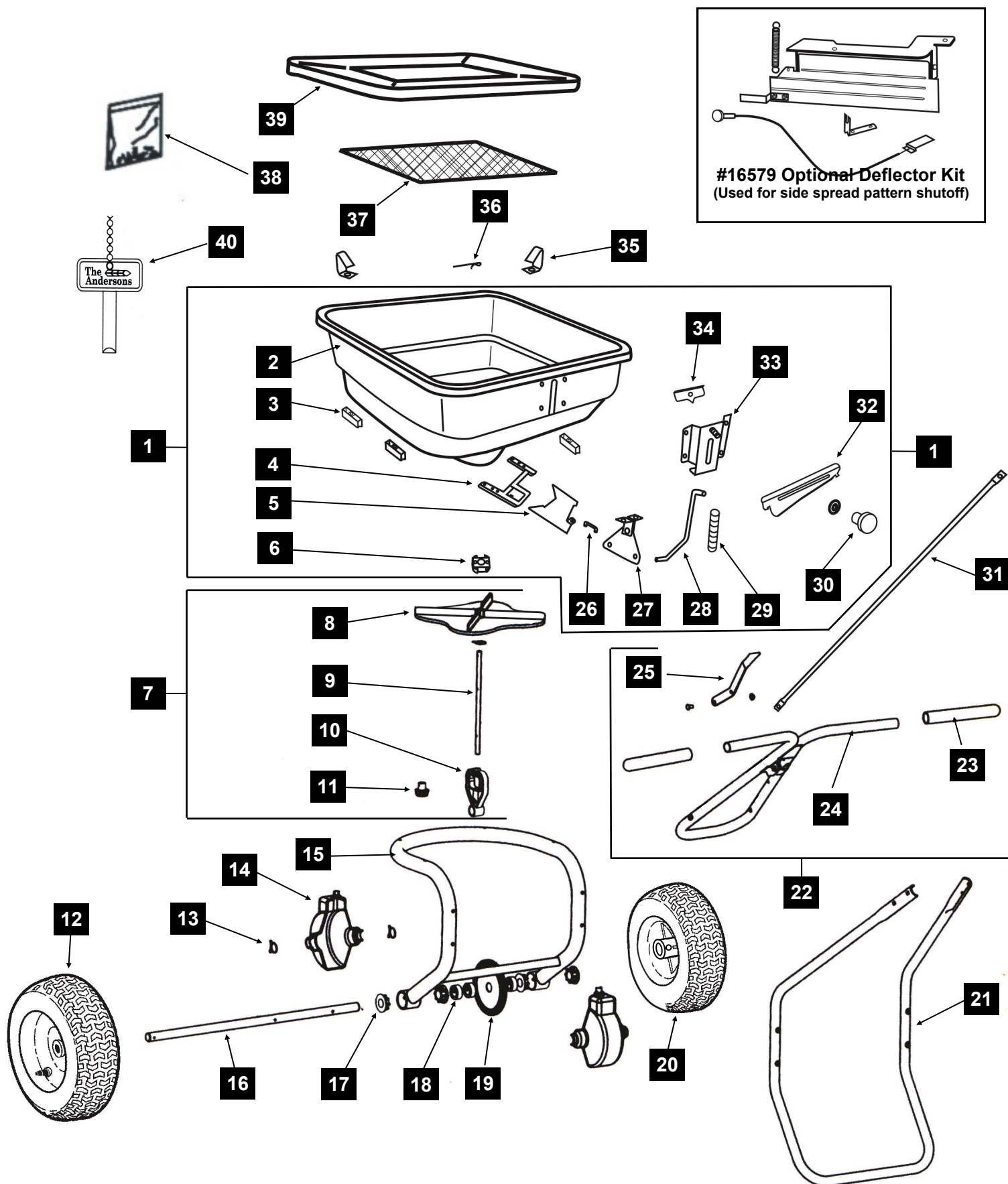


Parts Diagram-LCO-1000



Ordering Parts

See diagram for assistance in identifying specific parts.

For parts orders, call 574-848-7491 (Note: Sales of parts for the Andersons spreaders are handled by EarthWay).
IMPORTANT: When ordering replacement parts, always provide the following information:

- 1) Part number (DO NOT use key numbers when ordering parts. ALWAYS use part numbers.)
- 2) Part description
- 3) The Andersons model LCO1000 (product code ASPLCO1000)

KEY #	PART DESCRIPTION	PART #
1	Hopper Assembly	16591
2	Hopper *	16592
3	Hopper Spacer (set of 4)	16603
4	Shutoff Plate Guide *	14836-1
5	Shutoff Plate *	16594
6	Impeller Shaft Bearing Assembly *	14312-1
7	Impeller Assembly (includes #8 thru #11)	16596
8	Impeller	16597
9	Impeller Shaft	16598
10	Gear Carrier, Complete w/ Grease Fittings	780155
11	Pinion Gear	780122
12	Idler Wheel	14857
13	Retainer Clip (set of 3)	780180
14	Gearbox Cover Half (set of 2)	780110
15	Frame Assembly (includes #17)	16600
16	Axle	16599
17	Axle Bearing (set of 4)	16412
18	Axle Collar (set of 3)	780200
19	Ring Gear	780121
20	Drive Wheel	14856
21	Rest	16604
22	Upper Handle Assembly (includes #23 & #25)	15512
23	Hand Grips (set of 2)	14870
24	Upper Handle	15498
25	Main Shutoff Lever Assembly	15513
26	Shutoff Plate Link *	14846
27	Pivot Lever Assembly *	14878
28	Lower Control Rod w/ swivel *	14917
29	Rate Control Spring *	13354
30	Rate Control Knob/Washer *	12704
31	Control Tube	14916
32	Rate Control Plate *	16595
33	Rate Control Housing *	15527
34	Pointer *	12708
35	Hopper Screen Clip (set of 2)	780440
36	Agitator Pin	780100
37	Hopper Screen	14863
38	Fastener Pack	15579-1
39	Hopper cover	14606-1
40	Calibration Key (see calibration instructions)	15740
—	Optional Side Deflector Kit (Product Code SDSHIELDLCO)	16579

* Indicates parts in Hopper Assembly



**For More
Information
Call . . .**

1-800-225-2639
 (U.S. Only)

**The Andersons' toll-free
Helpline. This helpline is
provided to give you more
Information about
Andersons Turf Products.**



**Or Visit Our
Website At ...**
www.andersonsturf.com

**The Andersons, Inc.
480 Dussel Drive
Maumee, OH 43537 USA**

Warranty

The Andersons warrants to Purchaser the following:

1. Product will be free of defects in materials and workmanship for a period of one year from date of purchase.
2. The axle gear, gear support, pinion gear, axle, and axle bearings have a limited lifetime warranty to be free of defects in materials and workmanship.
3. If the spreader is used for commercial rental the Limited Warranty shall be limited to a period of 90 days.
4. All Unit and part replacement will be performed at the reasonable discretion of The Andersons and EarthWay.
5. Labor charges are not covered and the unit need not be returned to the dealer for warranty service.
6. Proof of purchase must be supplied to The Andersons.
7. For warranty questions, contact EarthWay at 574-848-7491.

The Andersons sole obligation under this warranty is limited to repairing or replacing the defective part.

This warranty does not extend to any Product or parts thereof that have been allowed to corrode, subjected to misuse, neglect, accident, or modification by anyone other than The Andersons or that have been affixed to any nonstandard accessory attachment or that have been used, stored, installed, maintained operated in violation of The Andersons instructions or standard industry practice. No agent, employee or representative of The Andersons has any authority to bind The Andersons to any affirmation, representation or warranty concerning the Product and any affirmation, representation or warranty made by any agent, employee or representative shall not be enforceable by Purchaser.

THIS WARRANTY EXTENDS ONLY TO THE ORIGINAL PURCHASER AND IS EXPRESSLY IN LIEU OF ANY OTHER EXPRESS OR IMPLIED WARRANTIES, INCLUDING WITHOUT LIMITATION ANY IMPLIED WARRANTY OR MERCHANTABILITY OR FITNESS OR INTENDED USE FOR A PARTICULAR PURPOSE AND OF ANY OTHER OBLIGATION ON THE PART OF The Andersons. The Andersons SHALL NOT BE LIABLE FOR ANY INCIDENTAL, SPECIAL OR CONSEQUENTIAL LOSS, DAMAGE OR EXPENSE DIRECTLY OR INDIRECTLY ARISING FROM THE USE OF ANY OF THE PRODUCT INCLUDING, BUT NOT LIMITED TO, DAMAGE OR LOSS OF OTHER PROPERTY OR EQUIPMENT, LOSS OF PROFITS OR REVENUE, COST OF CAPITAL, COST OF PURCHASED OR REPLACEMENT GOODS, OR CLAIMS OF CUSTOMERS OF PURCHASER.



It is our first priority to improve our products' quality
and performance whenever possible.

Your comments and questions are always welcome-

Please call our Helpline: **1-800-225-2639**
(U.S. Only)

Or Visit Our Website At ...

www.andersonspro.com

**The Andersons, Inc.
480 Dussel Drive
Maumee, OH 43537**